

Quick Guide of Using Amazon Echo to Control Smart Devices

1. What you need to get started

Before using Echo to control your smart devices, make sure you meet the following conditions.

- Stable Wi-Fi network which could access to Amazon server.
- An Echo device, including Echo, Echo Tap, or Echo Dot.
- An Amazon account. (If you don't have an Amazon account, please [register](#) online first)
- Caliber Smart Home-app and a related account.
- Smart devices.

2. Add devices in the Caliber Smart Home-app (Refer to App Instruction)

You can skip this part if you've already add some devices to your Caliber Smart Home account, and in the meantime the devices' names are easily recognized.

2.1 Download Caliber Smart Home-app (Refer to App Instruction)

You can scan the QR code below to download the Caliber Smart Home-app



You can also search for "Caliber Smart Home" in either the App Store or Google Play to install the app.

Note: "Caliber Smart Home" app is just an app name (for example), you can download the app you need.

2.2 Register a Caliber Smart Home account and sign in the app (Refer to App Instruction)

Open the Caliber Smart Home-app, tap "Register" to register an account, then sign in the app.

2.3 Add device and change device's name (Refer to App Instruction)

Sign in with the Caliber Smart Home account, add the device, then change device name to a easily recognized word or phrase, like e.g. "bedroom light".

3. Set up an Amazon Echo and enable the Caliber Smart Home Skill

A user can configure Echo through web or the Alexa app. Web configuration link: <http://alexa.amazon.com/spa/index.html>.

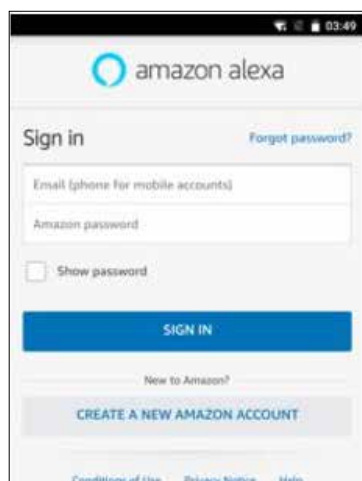
Search for "Amazon Alexa" in the App Store or Google Play to install the app.

We take the app configuration as an example in the screenshots below. Configuration through web and app are basically the same.

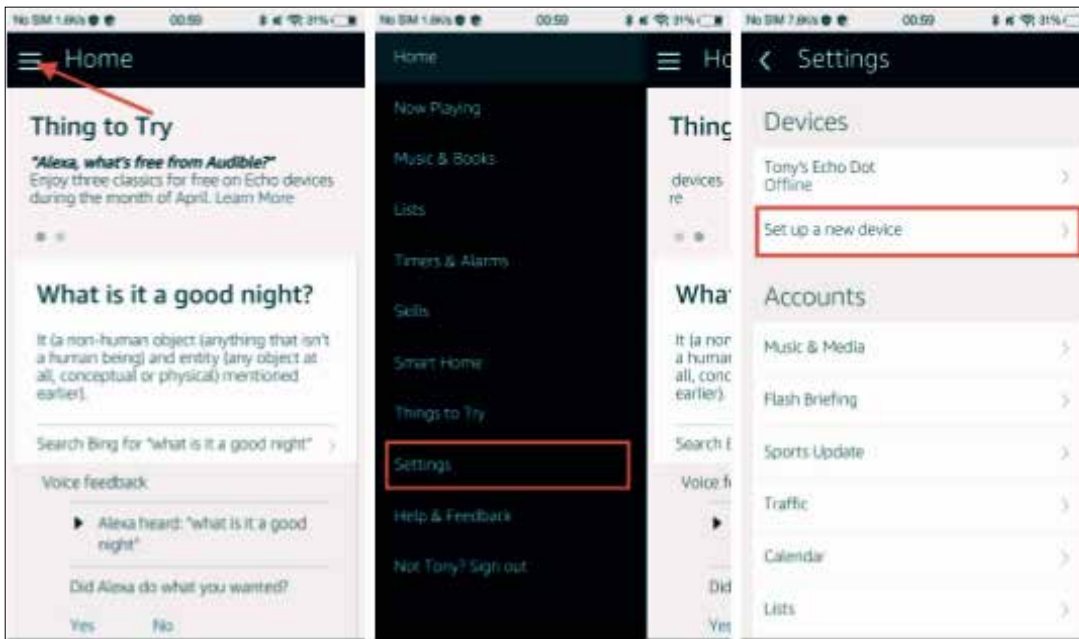
3.1 Set up Echo with the Alexa app

You can skip this part if your Echo is already set up.

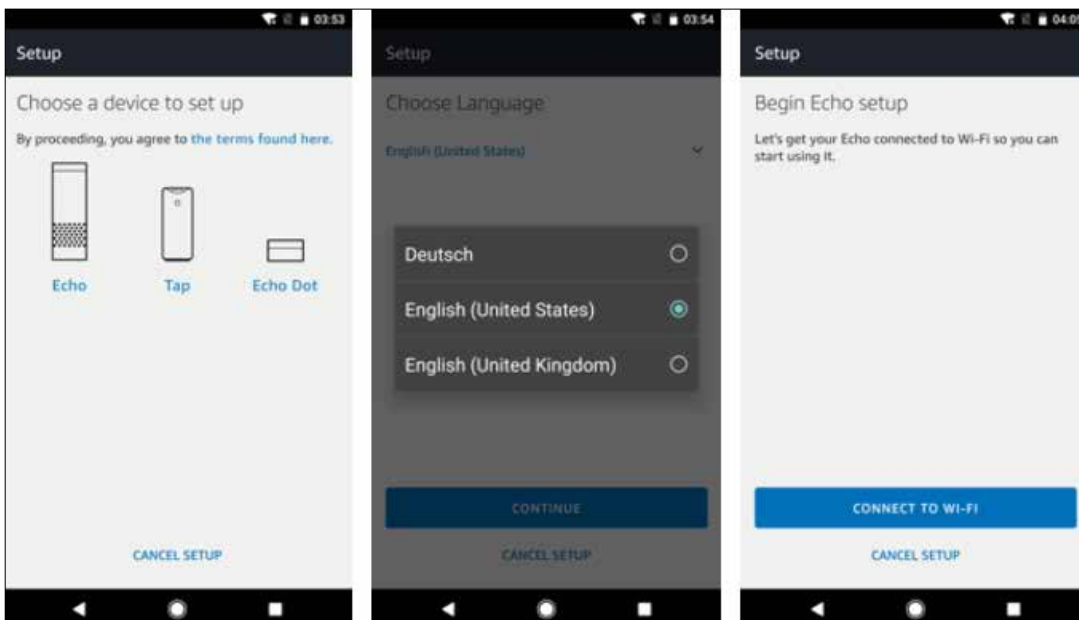
- Make sure your Echo device is energized.
- Make sure the Echo is in a Wi-Fi network that can access Amazon services smoothly.
- Open the Alexa app by tapping the app icon on your mobile device.
- Type in your Amazon account and password, then tap "SIGN IN".



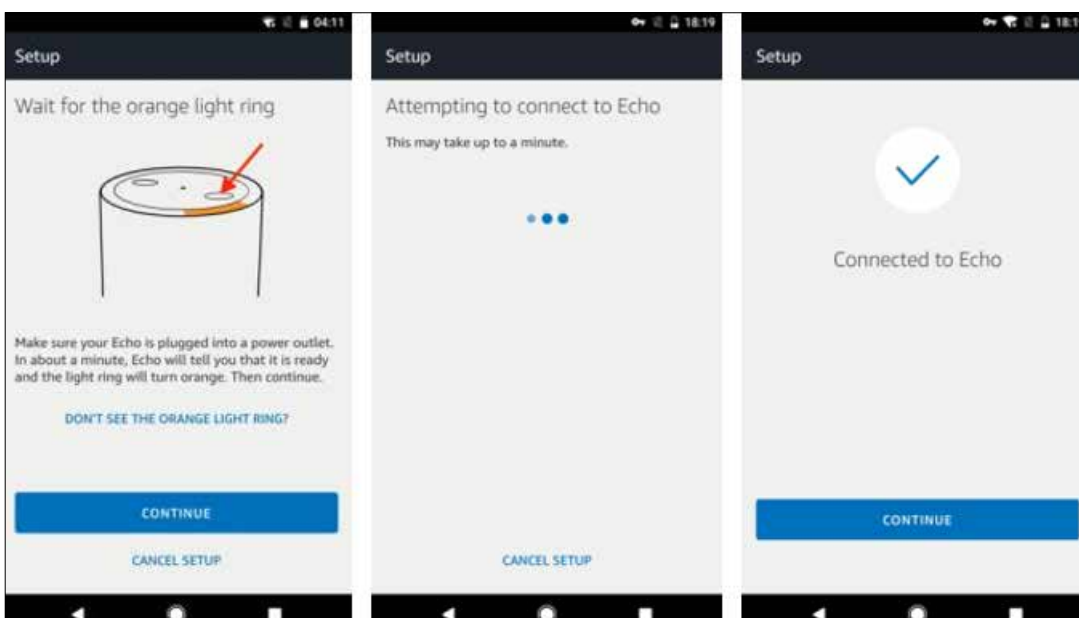
- Tap the hamburger menu on the top left corner, select “Settings,” then tap “Set up a new device.”



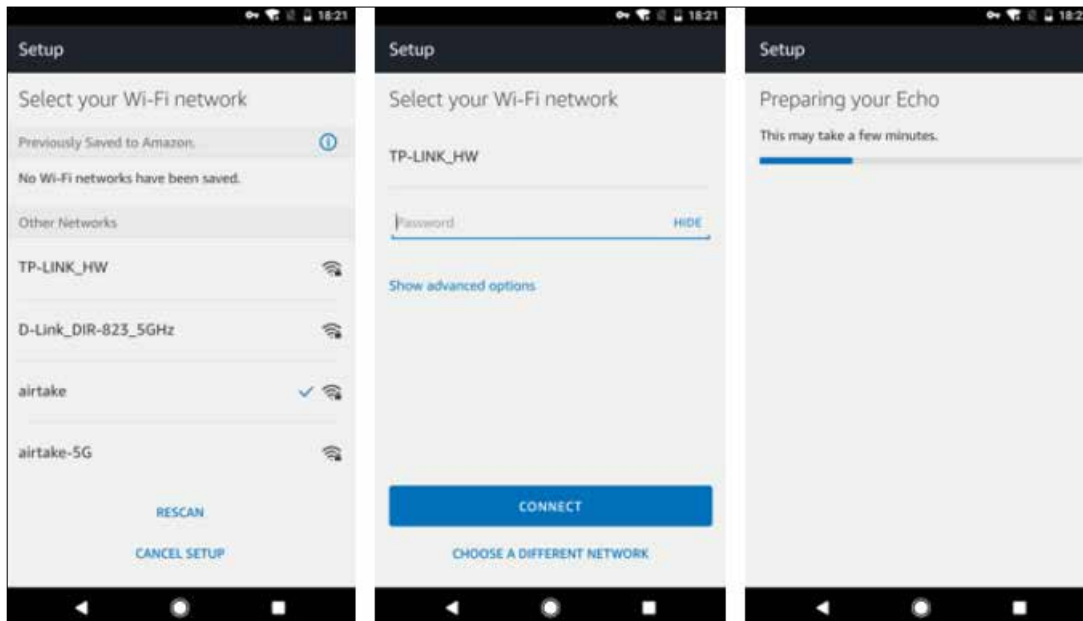
- Select your Echo model, choose a proper language, then tap “CONNECT TO WI-FI”.



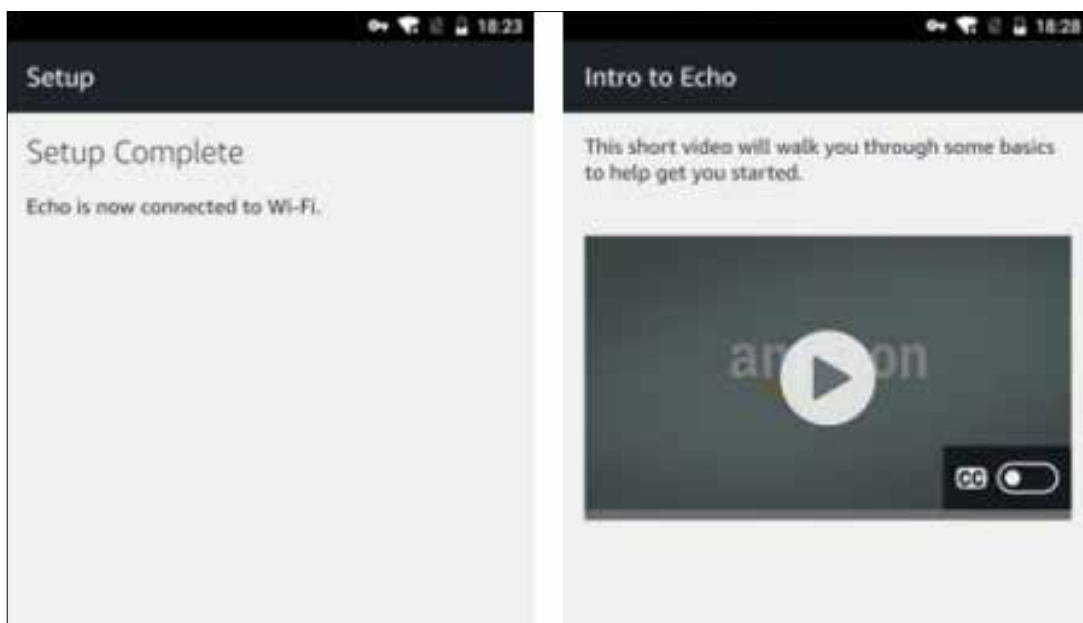
- Long press the dot button on the top of your Echo device until the orange light shows up, then tap “CONTINUE”. When your phone is connected to Echo, tap “CONTINUE”.



- Select a Wi-Fi network to let Echo have access to the internet. Type in the Wi-Fi password, then tap “CONNECT”. Echo may take several minutes to connect to the network.

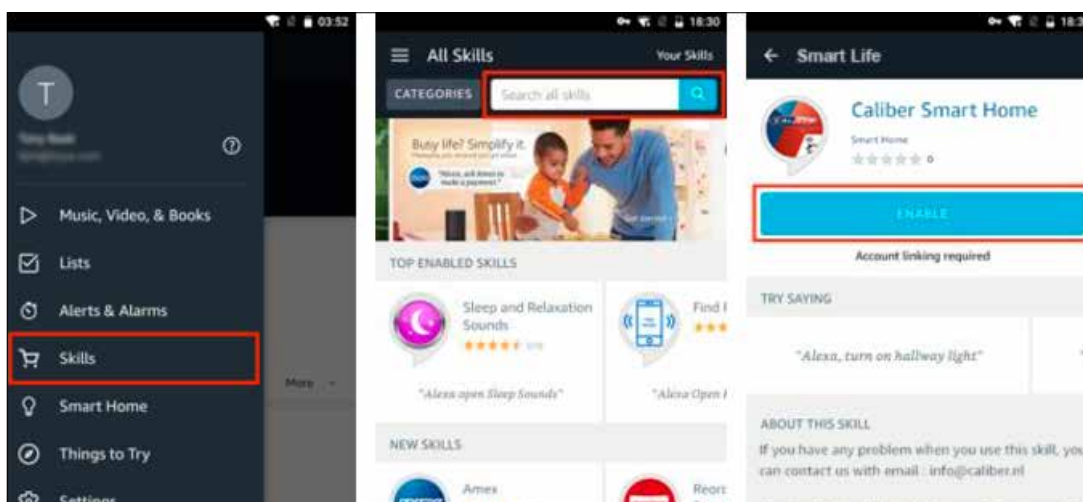


- Tap “CONTINUE” when Echo is connected to the network. After an introduction video, tap “CONTINUE” to finish the setup.

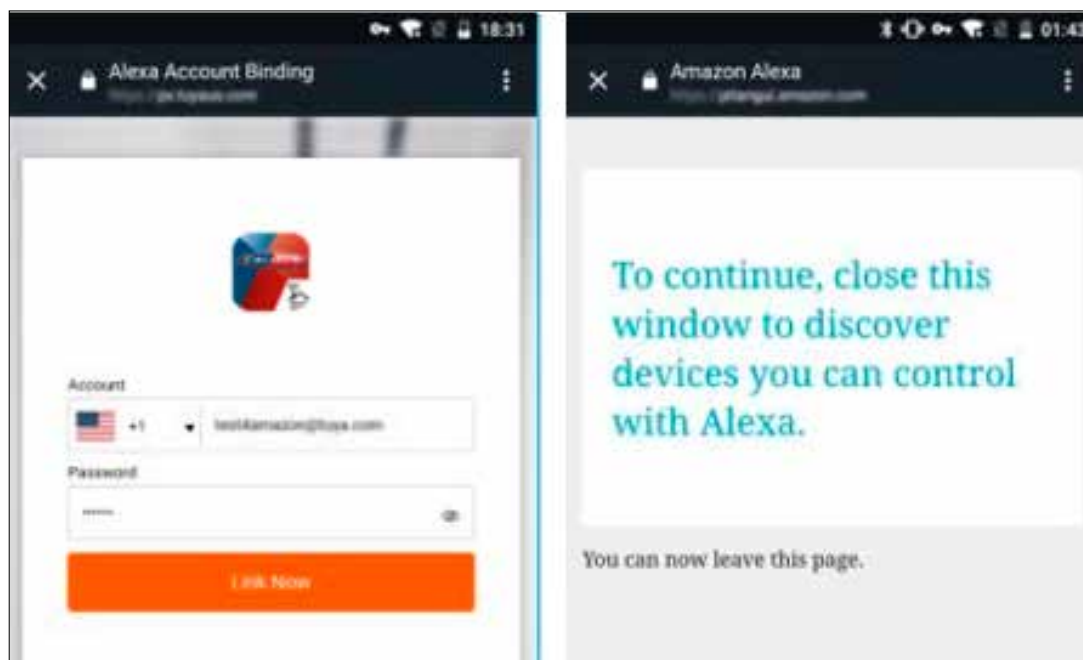


3.2 Link your Caliber Smart Home account to Alexa

- Tap “Skills” in the hamburger menu, then search for “Caliber”. Select “Caliber Smart Home” in the results and tap “ENABLE” to enable the Skill.



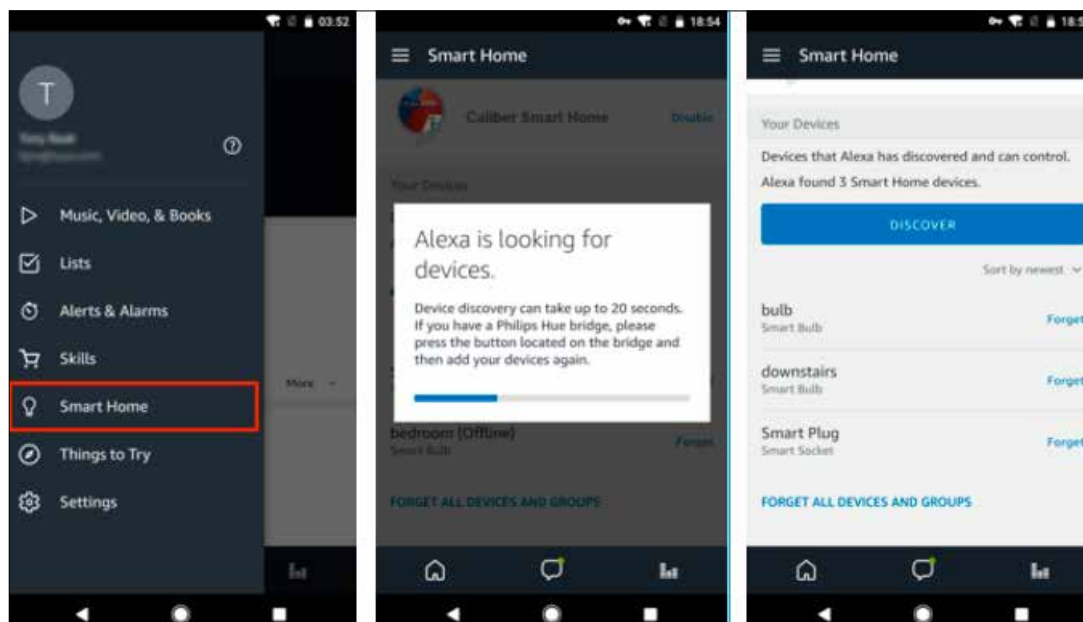
- You will be redirected to the account link page. Type in your Caliber Smart Home account and password. Don't forget to select the country/region where your account belongs to (flag). Then tap "Link Now" to link your Caliber Smart Home account. The country/region, the account, and the password must match with the exact content in Step 2.2.



4. Control your smart devices through Echo

4.1 Discover devices

Echo needs to discover your smart devices before it can control them. You can say "Alexa, discover devices" to Echo. Echo will discover devices which have already been added in the Caliber Smart Home app. You can also tap "DISCOVER" to discover the smart devices. Discovered devices will be shown in the list.



Note: every time you change the device's name in the Caliber Smart Home-app, Echo must re-discover before you control them.

4.2 Control devices by voice commands

Now you can control your smart devices through Echo. You can use the following commands to control your devices (e.g., bedroom light):

- Alexa, turn on/off bedroom light.
- Alexa, set bedroom light to 50%.
- Alexa, brighten/dim bedroom light.
- Alexa, set bedroom light to green.
- Alexa, set bedroom light to warm white.
- Alexa, set air conditioner to 24°C.